

3D FLY



3D FLY for instant identification and highest throughput. A true on-the-fly experience.
Manufactured in Europe.



- | | |
|--|---|
| (1) Touchless hand capture on-the-fly | (7) PIN Code, QR Code |
| (2) Scanning four fingerprint samples simultaneously | (8) Verification using combined ID factors |
| (3) High-speed: Walk by - fly through | (9) Designed for integration with speedgates |
| (4) Hygienic for maximum user comfort | (10) Easy setup of Time & Attendance buttons |
| (5) Up to 30'000 users | (11) Versatile configuration and customizing (customer workflows, user interface) |
| (6) 7-inch color touchscreen | (12) Made in Europe |

Fingerprint enrollment possibilities of the TBS ecosystem:

- (1) on 3D FLY using touchscreen
- (2) on 3D FLY using remote control
- (3) on 3D ENROLL USB sensor (requires at least 2 fingerprints)



DATASHEET 3D FLY



TECHNICAL SPECIFICATIONS

| Category | Feature | Standard | Optional |
|-------------------------|-------------------------------------|------------|----------|
| Biometric Sensor | Touchless multiple finger scan | • | |
| | | | |
| ID Factors | PIN | • | |
| | QR Code | | • |
| User Interface | Touchscreen size | 7" | |
| | Touchscreen resolution | 1024 × 600 | |
| | Loudspeaker | • | |
| Biometrics | Identification (1:N) database limit | 10'000 | 30'000 |
| | FRR at FAR 1:100'000 | < 0.5% | |
| Communication | LAN | • | |
| Interfaces | RS-485 (OSDP) / RS-232 | 1 / 1 | |
| | Wiegand out | 1 | |
| | Relay (NO/NC/COM, max. 60V/30W) | 2 | |
| | GPIN / GPOUT | 2 / 2 | |
| Installation | Power supply rating | 24 VDC | |
| | Max. power consumption | 100 W | |
| | Operating temperature | 0 to 45 °C | |
| | Operating humidity | 10 to 90% | |
| | Floor mount | • | |
| Certifications | CE, FCC/IC, ISO 9001/14001 | • | |

ACCESSORIES & FEATURES

Hardware Extensions (optional):

- Power Supply, 24 VDC/9.2A Output
- TBS Door Controllers:
CONTROLLER LITE (2 relays, 2 GPIN/GPOUT, via RS-485)
CONTROLLER SMART+ (4 relays, 4 GPIN, 4 GPOUT, via RS-485 or LAN)

Software Extensions (licensed):

- QR Code: Power Package «Multi-Factor» required
- Extended Identification (1:N) limit with BIOMANAGER Premium Plan

TBS System Security:

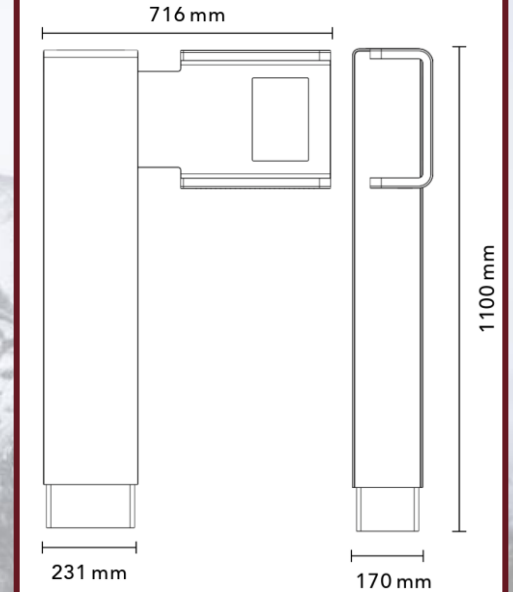
- Multi-level data encryption, with option to define a custom Template Encryption Key
- Protected communication channels (SSL) with option to use custom SSL certificates

Seamless Integration:

- Device connects to TBS BIOMANAGER Server hosted On-Premise or in the TBS Cloud
- Flexible and versatile Enrollment Options: On-Device or Web enrollment from TBS BIOMANAGER
- Flexible integration options
 - REST APIs on system and device level available
 - Enrollment integration into 3rd party software supported

DIMENSIONS

Floor mount for indoor installation

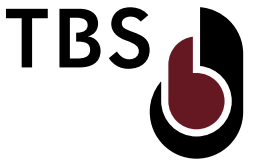


CUSTOMIZING



MORE THAN JUST A READER

FIVE REASONS FOR YOUR CHOICE



(1) EUROPEAN COMPETENCE YOU CAN TRUST

Swiss perfection, German thoroughness and Czech ingenuity - built on integrity and reliability.

(2) TAILOR-MADE FOR DEMANDING CLIENTS

From the world's top-rated airport to the No.1 Department of Defence, TBS is the undisputed leader in bespoke solutions.

(3) ALL-IN-ONE PLATFORM

We deliver the full spectrum: multiple bio-metric technologies on one powerful platform, integrated with all major security providers.

(4) PARTNERSHIP BEYOND THE PROJECT

For us, winning a project is only the beginning. Long-term service & support is what truly separates the wheat from the chaff.

(5) THE VALUE OF A QUALITY INVESTMENT

More performance & flexibility – less risk



LET'S GET TO WORK



TRUST BIOMETRICS
SERVICES COMPETENCE
SPECIALIST FLEXIBILITY QUALITY
HOSPITALITY TERMINALS
TRUST SOFTWARE
TOP-REFERENCES SWISS QUALITY
SWISS INTERGRITY TOUCHLESS
DURABILITY RELIABILITY SERVICES LONGTERM
TOUCHLESS SECURITY
MANUFACTURER COMPETENCE

