

# TBS – SIEMENS INTEGRATION

## SiPass integrated™

**SIEMENS**  
*Ingenuity for life*

---

### SEAMLESS BIOMETRIC ACCESS CONTROL

TBS is proud to be partnered with Siemens, one of the world's leading access control system providers.

Siemens SiPass integrated™ is a powerful and extremely flexible access control system that enables to manage access to anything from a single low-rise office with just a few doors to massive high-rise buildings with tens of thousands of doors, gates, barriers and elevators at multiple sites around the globe.

The Siemens TBS integration provides a very high level of security without compromising convenience and ease of access for system users and fits into all common state-of-the-art IT environments. Users can now be enrolled into TBS using the SiPass integrated™ web client. The wizard-driven enrollment is easy to use and enables users to enroll multiple fingers directly from the SiPass integrated™ application.

Here are just some of the advantages of the integration:

#### **Biometric Enrollment from SiPass integrated™**

The seamlessly integrated solution offers a variety of biometric enrollment options:

- Central enrollment on USB sensor (2D or 3D finger)
- Remote enrollment on any TBS reader
- Directly on a TBS reader, using the touchscreen
- Mobile enrollment on a tablet (2D finger)

#### **Single User Interface**

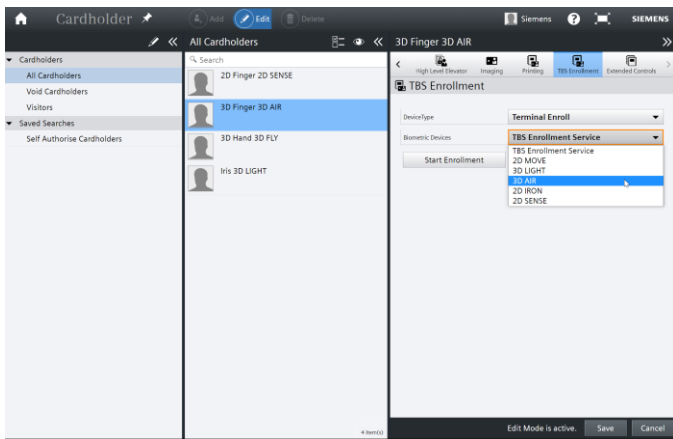
Administrators of the system can access all features and functionality from a single, intuitive user interface, removing the need to switch between applications. This also includes the enrollment of the users which can be performed from SiPass.

#### **Synchronisation of Biometric Data**

The integration means that user data are automatically synchronized from SiPass integrated™ to the TBS Server, which also handles all biometric templates. Once enrolled, the templates are automatically distributed to all TBS readers in the network. When a user is deleted, the user's templates and access rights are removed immediately.

#### **Identification and Verification Modes**

TBS offers the flexibility of both identification and verification modes. Identification requires only a biometric trait (iris, hand or fingerprint) to be provided by the user (1:N). Verification requires additional credentials to be presented by the user, such as card or PIN, and the user's identity is confirmed by biometric match (1:1). This allows greater control in high security locations or in installations with large databases of users.



**Future-proof**

Both TBS and Siemens are continuously aligning research and developments, thereby ensuring that customers can continue to benefit from state-of-the-art integrated solutions.

**Reliability**

TBS supplies the world’s most reliable biometric fingerprint and iris recognition solutions. We have a solution for every type of installation.

**THINK BIOMETRICS – THINK TBS!**

Considering a project with us? We would be more than happy to assist you. Contact us:

Touchless Biometric Systems AG  
 Switzerland  
 Rietbrunnen 2  
 8808 Pfäffikon SZ

[www.tbs-biometrics.com](http://www.tbs-biometrics.com)  
[tbs@tbs-biometrics.com](mailto:tbs@tbs-biometrics.com)  
 Phone +41 (0)55 533 20 00

**Flexibility**

The TBS – Siemens integration enables integrators and customers to specify the most appropriate biometric device from one of the largest portfolios on the market. Multiple types of biometric readers can be deployed across a single installation or enterprise, allowing to select the appropriate biometric technology for every access point.

**Scalability**

The TBS infrastructure has been designed for scalability and allows for an unlimited number of devices to be connected across an estate. Combine this with the unlimited number of doors that can be secured by Siemens SiPass integrated™ and you have a truly scalable solution.

**TBS WITH SiPass integrated™  
 SOFTWARE ARCHITECTURE**

